

**Characteristics**

**General description**

Pressure relief valves Series RDM are direct operated piston type valves with low hysteresis. They can be used as a P-T relief, and a T-T controlled counter balance valve. 4 pressure stages with max. pressure settings of 25, 64, 160 and 210 bar are available.

A pressure gauge/measuring port connection is available in the valve body.

**Function**

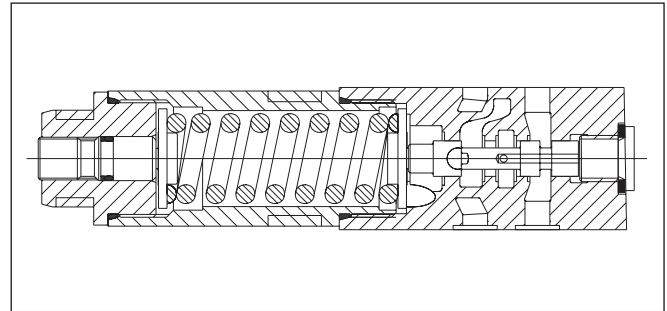
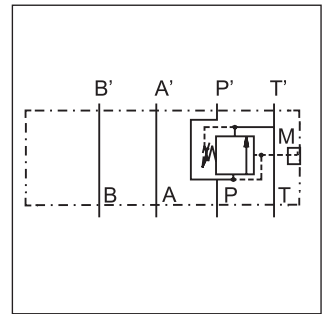
PT... pressure is relieved in P at the limited value.

Excess oil is led into T line.

TT... back pressure in T at the adjusted value (counter balance).

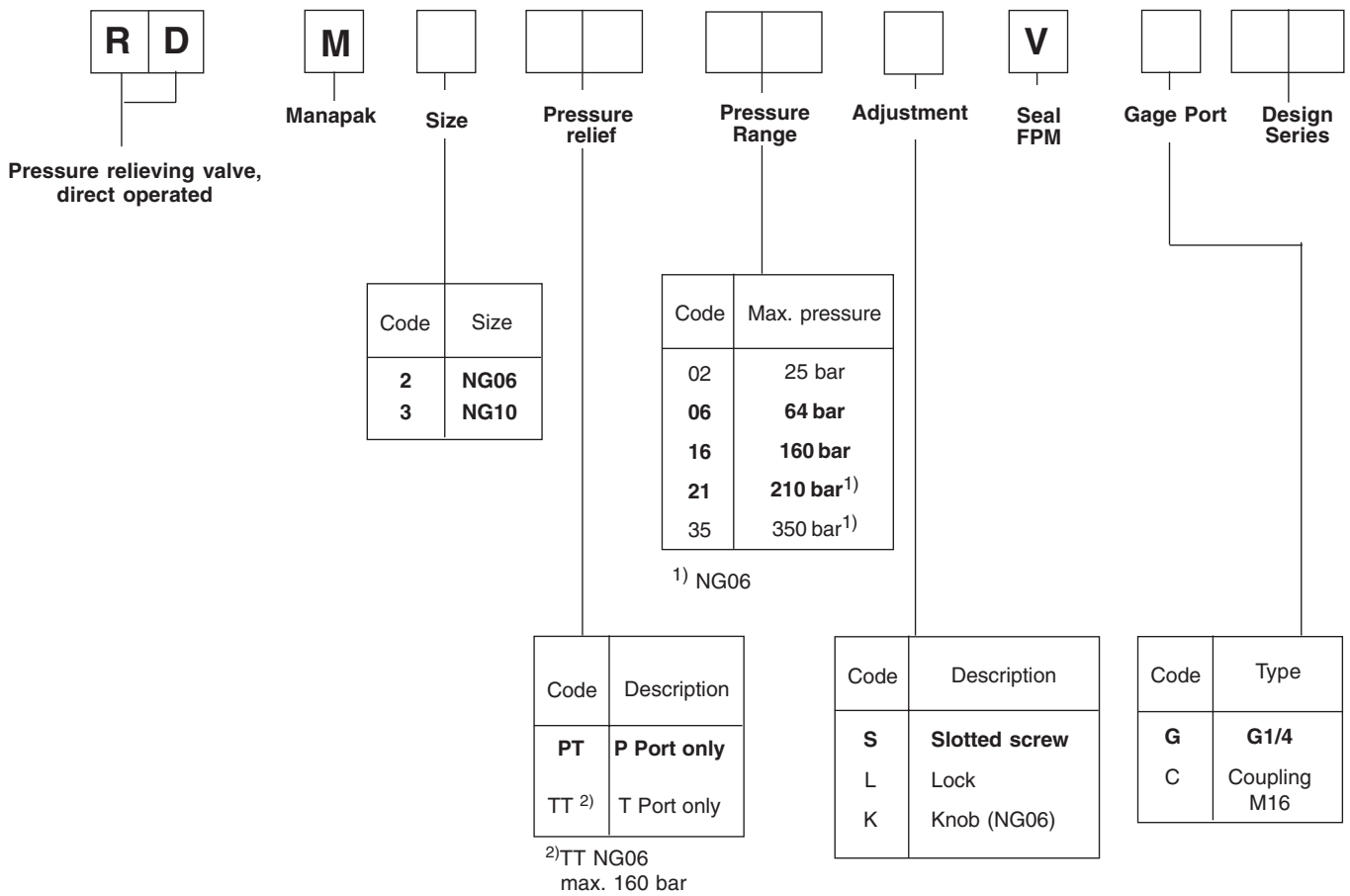
**Features**

- RDM Manapak sandwich valves may be selected to relieve pressure in the 'P' port or 'T' port.
- The direct operated, cushioned piston design results in fast response, low leakage and minimal hysteresis.
- Up to four pressure adjustment ranges are available with maximum pressure settings of 25, 64, 160 and 210 bar.
- Options include: A choice of two adjustment styles, and five gage port sizes.



**Characteristics**

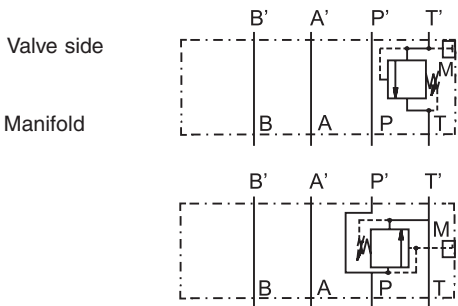
Series	RDM2	RDM3
Mounting pattern	NFPA D03, CETOP3, NG6	NFPA D05, CETOP5, NG10
Max. pressure P, A, B T	350 bar 50 bar	315 bar 10 bar
Max. flow	40 l/min	80 l/min
Pressure adjusted range	02    1.5 06    1.5 16    3 21    3 35    5	up to 25 bar up to 64 bar up to 160 bar up to 210 bar up to 350 bar
Viscosity range	12-230 cST	
Weight [kg]	1.3	2.6
Filtration	ISO Code 18/16/13 or better	



7

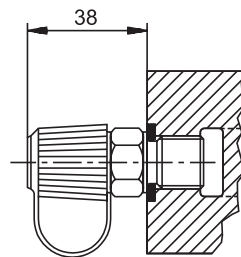
**Bold letters =**  
 Short-term availability

**Schematics**



**RDM...TT**

**RDM...PT**

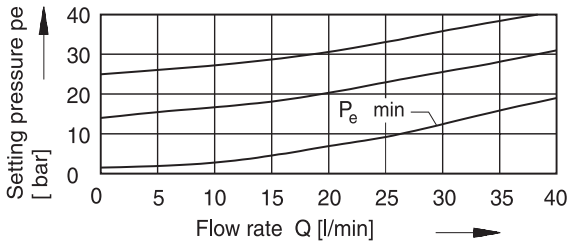


Seal kit PRDM2	
Seal	Order code
V	SK-RDM2-V

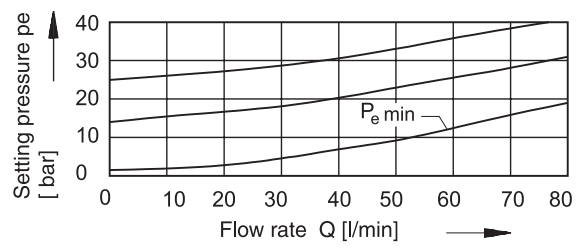
**RDM2**

**RDM3**

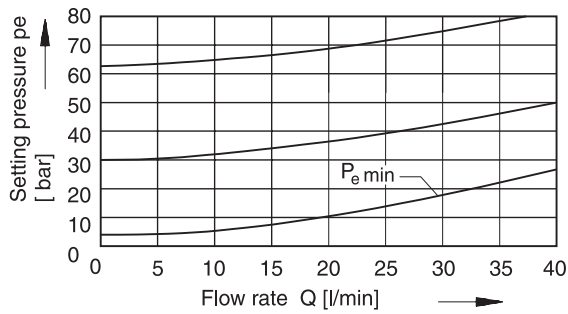
**RDM2 02**



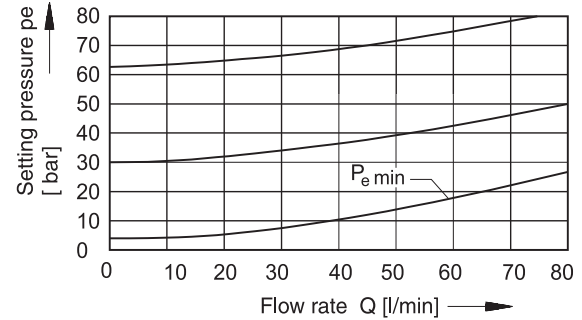
**RDM3 02**



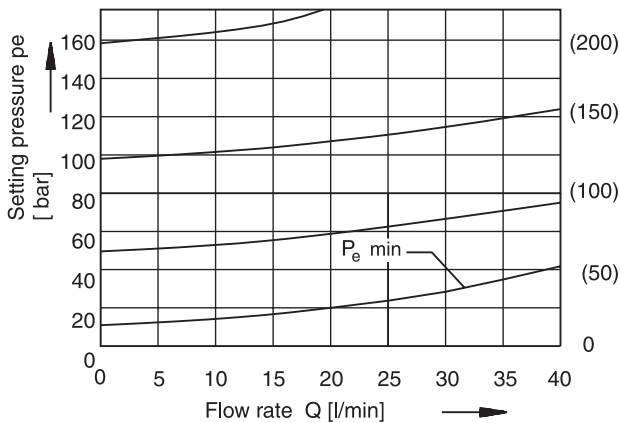
**RDM2 06**



**RDM3 06**



**RDM2 16, (21)**



**RDM3 16**

