

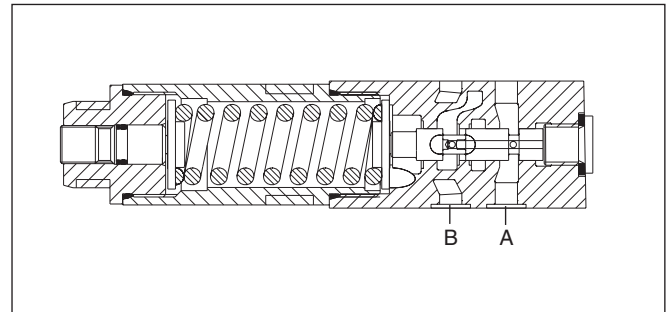
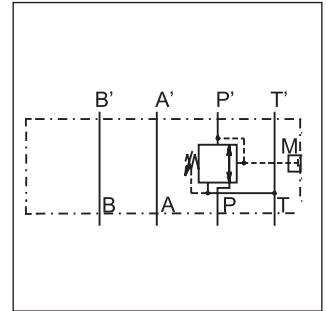
Characteristics

**Direct operated pressure reducing valves
Series PRDM**

Series PRDM are direct operated pressure reducing valves to regulate pressure in one area of a hydraulic circuit at a predetermined level below normal system pressure. Additionally, an integral pressure relieving function for the secondary reduced pressure circuit is incorporated into the design.

Funtion

These valves are "normally open" devices that allow fluid to flow trough the controlled port during their non-actuated or "at rest" condition. When downstream pressure exceeds the value set by the spring force, the control piston moves off its seat, closing off the flow path and thus reducing the fluid passing through from the main system. The cushioned piston modulates to maintain the preset pressure in this branch of the hydraulic circuit. If, due to external forces, the pressure continues to rise in this branch circuit, the piston will keep moving against the spring force allowing fluid to be drained to the tank, thereby limiting maximum pressure to the valve's setting.



Features

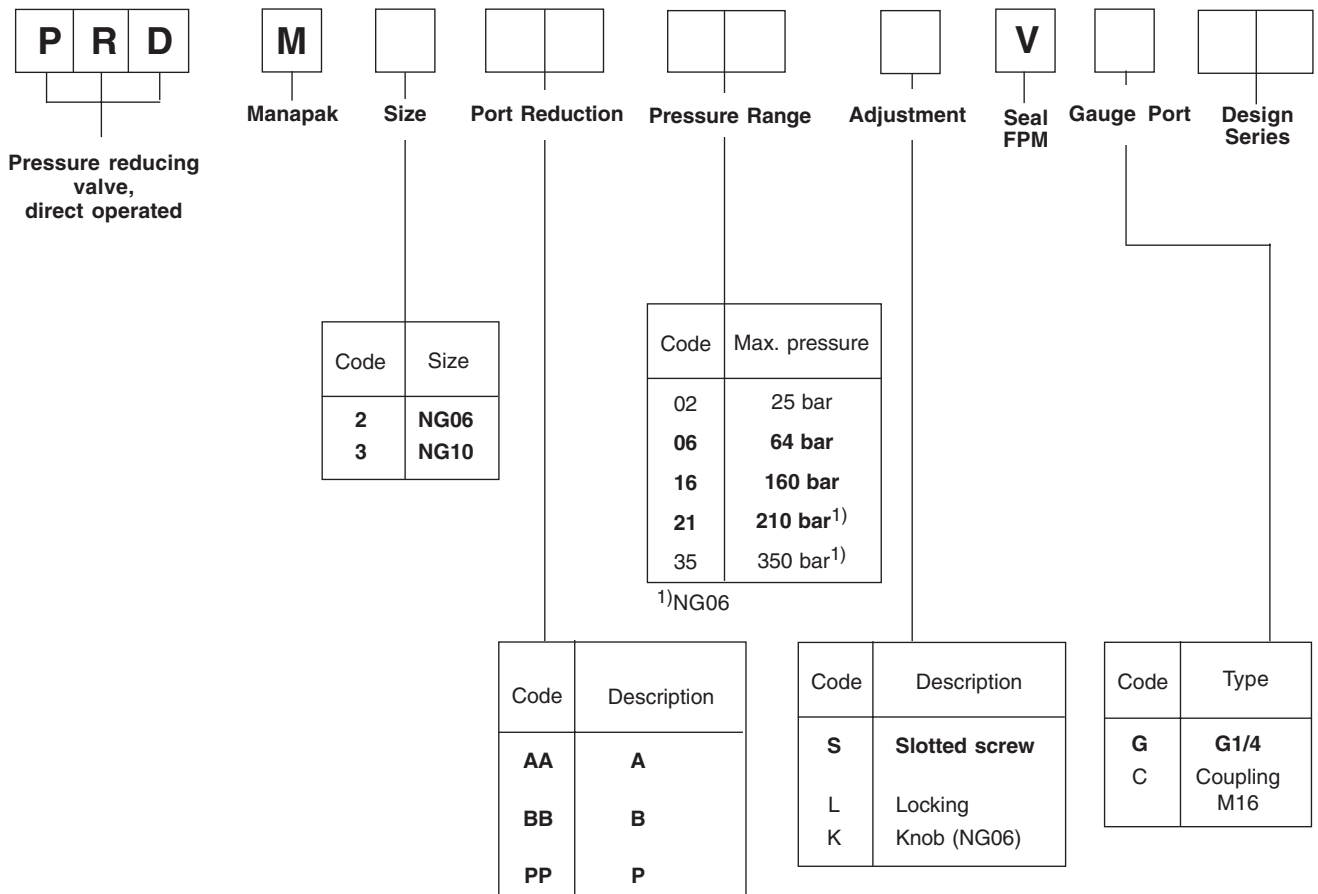
- PRDM Manapak sandwich valves may be selected to reduce pressure in the 'P' port, 'A' port or 'B' port.
- The direct operated, cushioned piston design results in fast response, low leakage and minimal hysteresis.
- Up to four pressure adjustment ranges are available with maximum pressure settings of 25, 70, 160 and 210 bar (363, 1015, 2320, 3045 PSI).
- Options include: A choice of two adjustment styles, and five gage port sizes.

Characteristics

Series	PRDM2	PRDM3
Mounting Pattern	NFPA D03, CETOP3, NG6	NFPA D05, CETOP5, NG10
Max. Operating Pressure P, A, B T	350 bar 50 bar	315 bar 10 bar
Max. Flow	40 l/min	80 l/min
Pressure Adjusted Range	02 1.5 06 1.5 16 3 21 3 35 5	up to 25 bar up to 64 bar up to 160 bar up to 210 bar up to 350 bar
Viscosity Range	12-230 cST	
Weight [kg]	1.3	2.6
Filtration	ISO Code 18/16/13 or better	

Note: max. leakage from P to A - 5ml/min

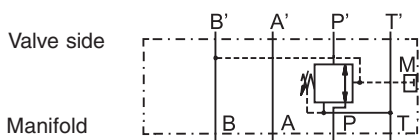
Ordering Code



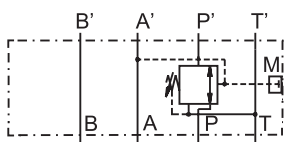
7

Bold letters = Short-term availability

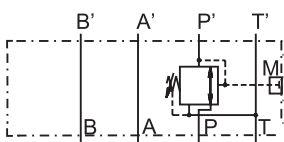
Schematics



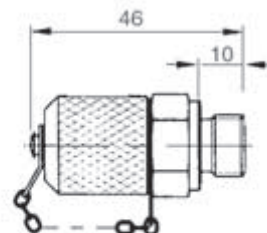
PRDM...BB



PRDM...AA



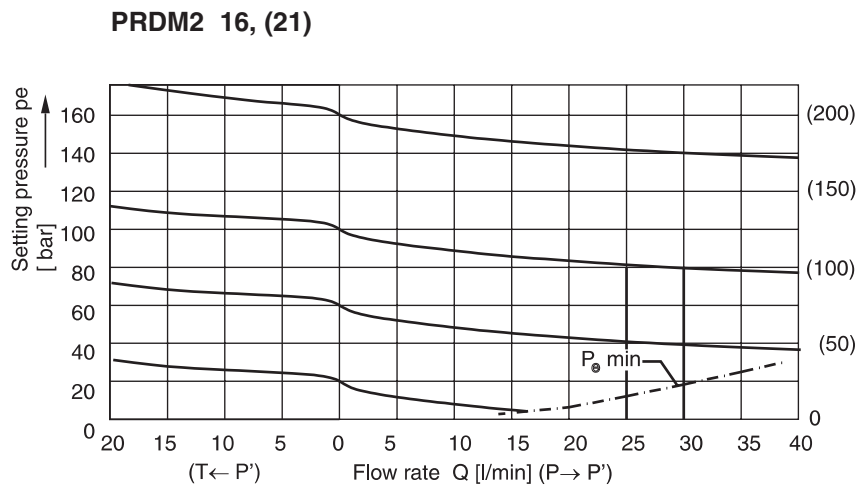
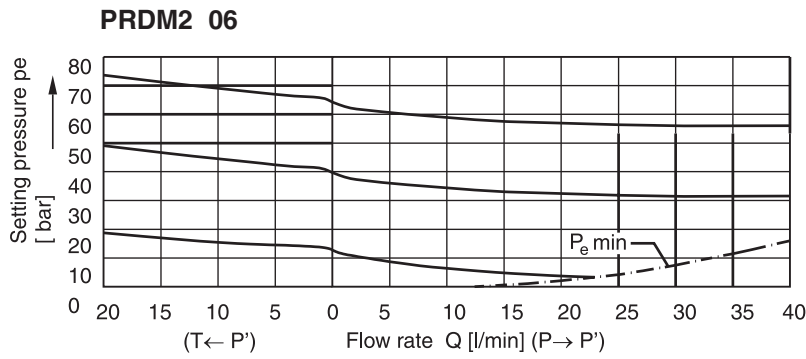
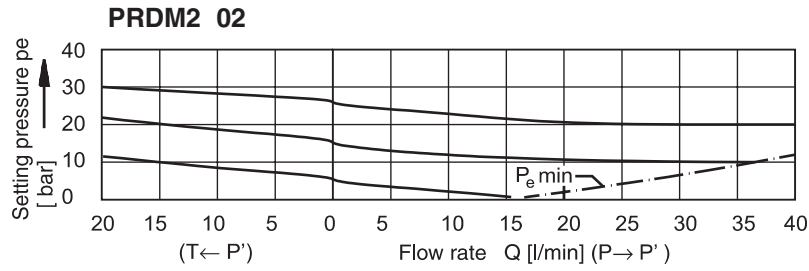
PRDM...PP



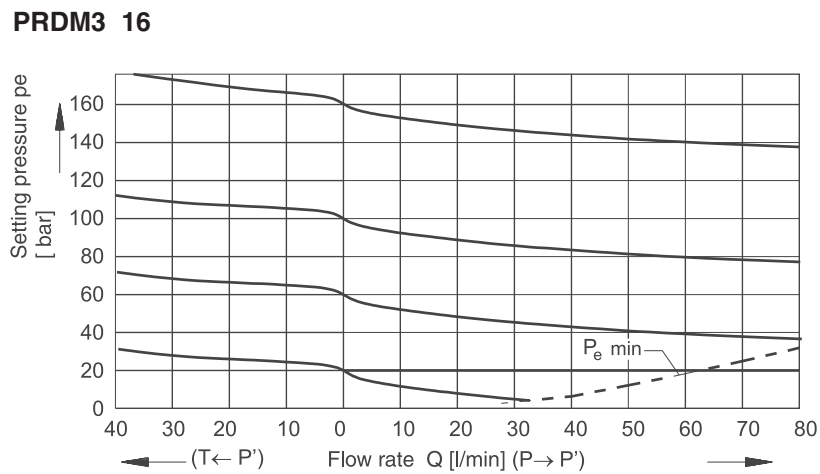
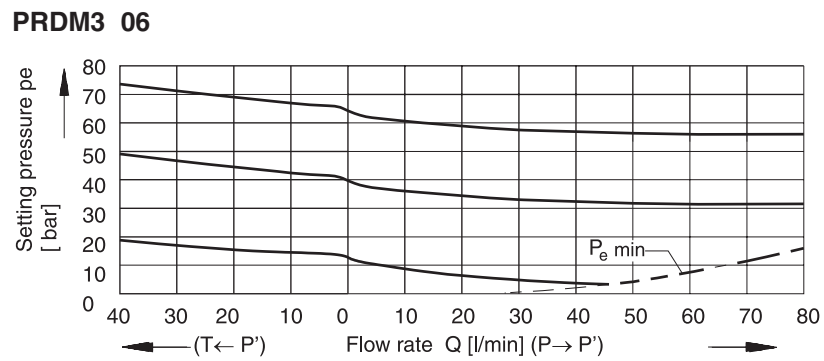
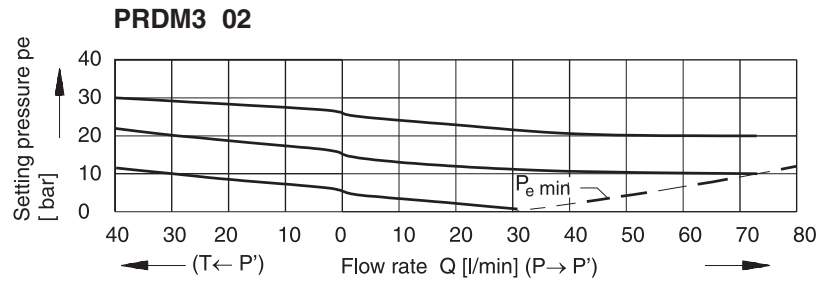
Gage port option C
EMA3R1/4EDA3C

Seal kit PRDM2	
Seal	Order code
V	SK-PRDM2-V

PRDM2

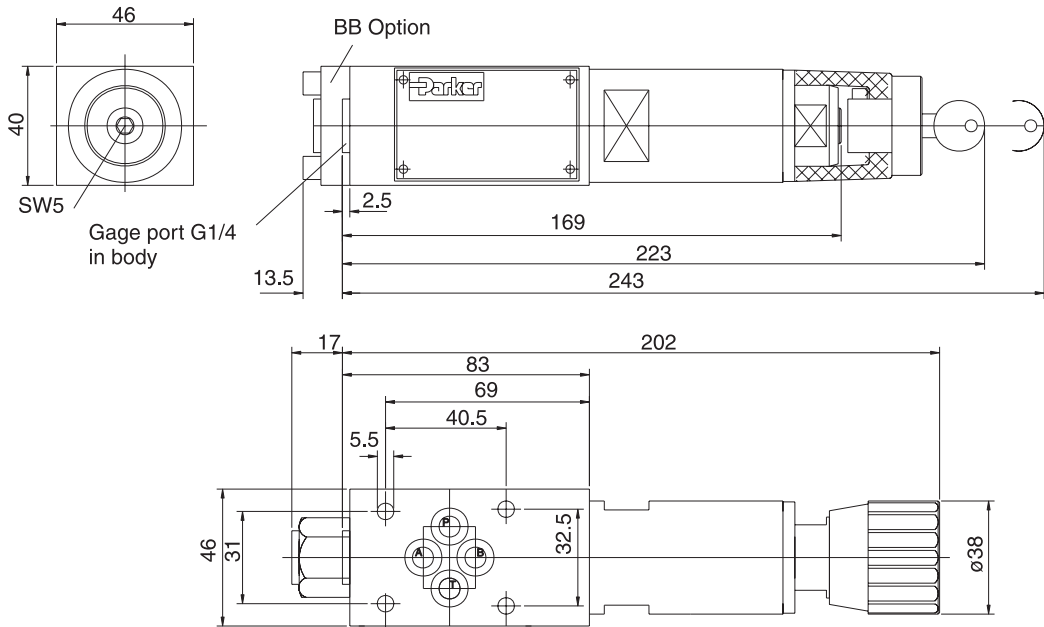


PRDM3



Dimensions

PRDM2



PRDM3

